



EPR ANNUAL CONFERENCE 2025

LEADING THE CHANGE IN REHABILITATION:
Towards Future-Proof Services

5 - 6 June 2025

Antwerp, Belgium

Travel Pack & Practical Information



Welcome to Antwerp!

Antwerp is a captivating blend of old-world charm and modern flair. Located in the Flemish region of Belgium and along the River Scheldt, it is home to one of Europe's largest seaports—the Port of Antwerp, which plays a major role in international trade. The city is also known as the hub of the world's diamond trade.

Antwerp was a major art capital in the 16th and 17th centuries, and was called 'home' by painters, such as Peter Paul Rubens and Anthony van Dyck, who helped shape Western art.

Fast forward to today, there are over 170 nationalities that live in Antwerp, making it one of Europe's most diverse cities. This diversity is reflected in its food, neighborhoods, and cultural festivals.

FUN FACT

The Bourse of Antwerp, built in 1531, is considered the first purpose-built stock exchange building in the world.

Must-sees and must- do's

Top Highlights in Antwerp



Cathedral of Our Lady

- A Gothic masterpiece and UNESCO World Heritage Site;
- Home to several works by Baroque artist Peter Paul Rubens;
- Towering spire dominates the skyline and offers a stunning interior.

Grote Markt (Main Square)

- Surrounded by ornate guild houses and the beautiful City Hall;
- The Brabo Fountain in the center depicts the legend of Antwerp's name.



Museum aan de Stroom (MAS)

- A striking red sandstone tower near the port;
- Explores Antwerp's global connections—through trade, migration, and art;
- Rooftop view gives a 360° look at the city and river.

Chocolate Nation Museum Tour

- World's largest Belgium chocolate museum;
- The immersive experience starts in the cocoa plantations of the equator and follows the cocoa bean to world's largest cocoa storage port in Antwerp (and lots of chocolate tasting in between!)
- Bookings: <https://www.chocolatenation.be/en>



Trendy areas like Eilandje, Zuid and Berchem offer a mix of culture, cafes, and nightlife.



GOOD TO KNOW

Antwerp is in the Dutch-speaking part of Belgium, but English is widely spoken, especially in shops, restaurants, and museums.



Travel

How to get to Antwerp

Although Antwerp has an airport, it is very small and carries out only a limited number of international flights. Therefore, you will need to fly into Brussels and then take a short (and beautiful) train or bus ride to Antwerp.

By Plane

There are two airports you can fly into:

1. **Brussels Airport (BRU – Zaventem)**

- Main international airport
- Has direct train connection to Antwerp

Getting to Antwerp from Brussels Airport by train:

The train station is located below the terminal in Brussels Airport (Level -1). After exiting the baggage claim area, follow the signs marked 'Train'.

To Antwerp Berchem Station (where the Radisson Hotel and Syntra Conference venue are located) or **to Antwerp Central Station**:

There are two direct trains you can take, depending on your arrival and subsequent train timetable:

IC train to Anvers-Central/Antwerpen-Centraal

- Usually leaves from Platform 1 once every hour (HH:41)
- Take for 2 stops to Antwerpen-Berchem Station or for 3 stops to Antwerpen-Centraal Station
- Duration: 25 minutes
- Tickets: Available at the entrance of the train station.

EuroCity (EC) Train to Rotterdam CS (NL)

- Usually leaves from Platform 2 once every hour (HH:11)
- Take for 2 stops to Antwerpen-Berchem Station or for 3 stops to Antwerpen-Centraal Station
- Duration: 25 minutes
- Tickets: Available at the entrance of the train station.

TIP

You can purchase your train ticket to Antwerp (Berchem Station or Central Station) online at: <https://www.belgiantrain.be/en>

Travel

How to get to Antwerp

2. Brussels South Charleroi Airport (CRL)

- Used by budget airlines like Ryanair and Wizz Air
- Has direct bus connection to Antwerp

Getting to Antwerp from Brussels South Charleroi Airport by bus:

Upon exiting the arrivals terminal at Brussels South Charleroi Airport (CRL), you'll find the Flibco shuttle bus terminal conveniently located just outside in front of Terminal 1. As you leave the terminal, follow the signs directing you to the bus area - you should arrive to a building clearly marked with the distinctive green and white Flibco branding.



Practical Information:

Stop in Antwerp: The Flibco bus arrives at Franklin Rooseveltplaats in Antwerp;

Duration: The bus journey from CRL to Antwerp is around 2 hours;

Tickets: You can buy a Flibco bus ticket to Antwerp by using the ticket machines inside the Flibco bus terminal or online. The ticket costs 19.99 € one way.

Timetable

Charleroi Airport (CRL)	Antwerp
06:15	07:50
Charleroi Airport (CRL)	Antwerp
08:15	10:30
Charleroi Airport (CRL)	Antwerp
09:15	11:10

For the full timetable, visit <https://www.flibco.com/en/timetable> and select 'Charleroi Airport (CRL) → Breda Timetable

TIP

You can purchase your bus ticket to Antwerp online at:
<https://www.flibco.com/en>

Conference Venue

Syntra – AB Antwerp

The Conference will be held at the **Syntra-AB Campus Antwerp**, located at Borsbeeksebrug 32, 2600 Antwerp, Belgium.



Conference room: Aula Room (ground floor)

Syntra-AB is a prominent VET centre with a mission to strengthen and develop competencies in a distinctly practice-oriented way for everyone. Established in 2002 through the merger of several regional training centres, it has become a key institution for adult education and dual learning. Its accessibility, dedication to lifelong learning, and inclusive approach make it a great venue choice for our Annual Conference!

How to get to Syntra-AB

From Antwerp Berchem Train Station: Syntra-AB is 350 m from the train station, which is a 3-4 minute walk. You need to exit the train station through the entrance on the side of Binnensingel Street. Once you do, on your right, you will immediately see a golden walking bridge – take it to the very end. Syntra AB will be on your right.

From Antwerp Central Train Station:

By train: Take the train for one stop to Antwerp-Berchem Station. Most departing trains have a stop there, but please make sure to check on the train schedule board, also to see which platform it leaves from. Once you get to Berchem Station, follow the above-written directions. Journey time is about 10 minutes.

From Antwerp Central Train Station:

By Bus: You can take bus 20 or bus 32 – their departure stop is located at **Antwerp-Central Station perron 11 (platform 11)**. There is a bus leaving about every 10 minutes. You need to take it for 5 stops to Antwerp-Berchem Station. Once there, follow the above-mentioned directions. Journey time is about 15 minutes.

By Metro: The Antwerp Diamant Metro Station a 2-minute walk from the Central Train Station. You can take line 9, direction Silsburg, for 4 stops to Berchem Station. Once there, follow the above-written directions.

From Radisson Hotel Antwerp Berchem:

From the Radisson Hotel, it is a 3-minute walk to Syntra-AB. When you exit the hotel, go to the right, and follow the walking bridge. Take your first right and walk until you see Syntra-AB on your right side.

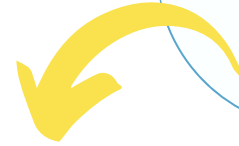
Antwerp Berchem Train Station Exit



Pre- Conference Social Activities

Wednesday, 4 June

Complimentary
activities included
in the conference
fee!



Welcome Reception: Drinks & Appetizers



Join us as we raise a glass to open the EPR Annual Conference 2025! Enjoy an evening of warm welcomes, light bites, and networking with colleagues, partners and participants from across the EPR community.

Time: 19:30 – 21:30

Address: De Koninck Brewart,
Mechelsesteenweg 291, 2018 Antwerp

Catering: from Syria, with Love

DE KONINCK
ANTWERP
CITY BREWERY



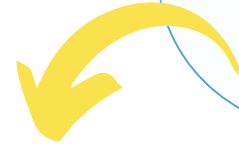
*from Syria,
with Love*



Conference Social Activities

Thursday, 5 June

Complimentary
activities included
in the conference
fee!



Antwerp Walking Tour



Step into the heart of Antwerp and let the cobblestone streets guide you through centuries of history, art, and architecture. Participants have a choice between 3 tours:

Tour 1: Historic Antwerp

Tour 2: Design & Culture

Tour 3: Fashion & Shopping

Time: 18:30 – 19:30

Meeting point: Antwerp Central Station

Details: Our tour guides will finish the tour near the location of the Gala Dinner, making it a 5-minute convenient walk to the restaurant.

Conference Gala Dinner



Celebrate the culmination of an inspiring conference with an evening of fine dining and conversation. Enjoy a thoughtfully curated menu, engaging company, and special moments that reflect the spirit of the EPR network.

Time: 19:30 – 22:30

Location: Koningin Astridplein 7
2018 Antwerp

Details: The Octave Restaurant is a 30-minute walk from the Radisson Hotel. If you prefer to take public transport, you can easily reach the location by train by purchasing a train ticket for 2.80 euro.

Contact Information

In case of any problems or emergency, please contact:

Raia Mihaylova: rmihaylova@epr.eu
+32 486 73 47 86

OR

Panita Ball: pball@epr.eu