

From care to employment

A Short Study on Practices Supporting Return-to-Work



About authors

Working group:

SIVA director
Ilona Jurševska



Deputy director
Solveiga Kabaka



Senior expert
Katrīna Sevruka



Head of the College
Inguna Zuševica



Deputy head
Laura Zeltiņa



Services

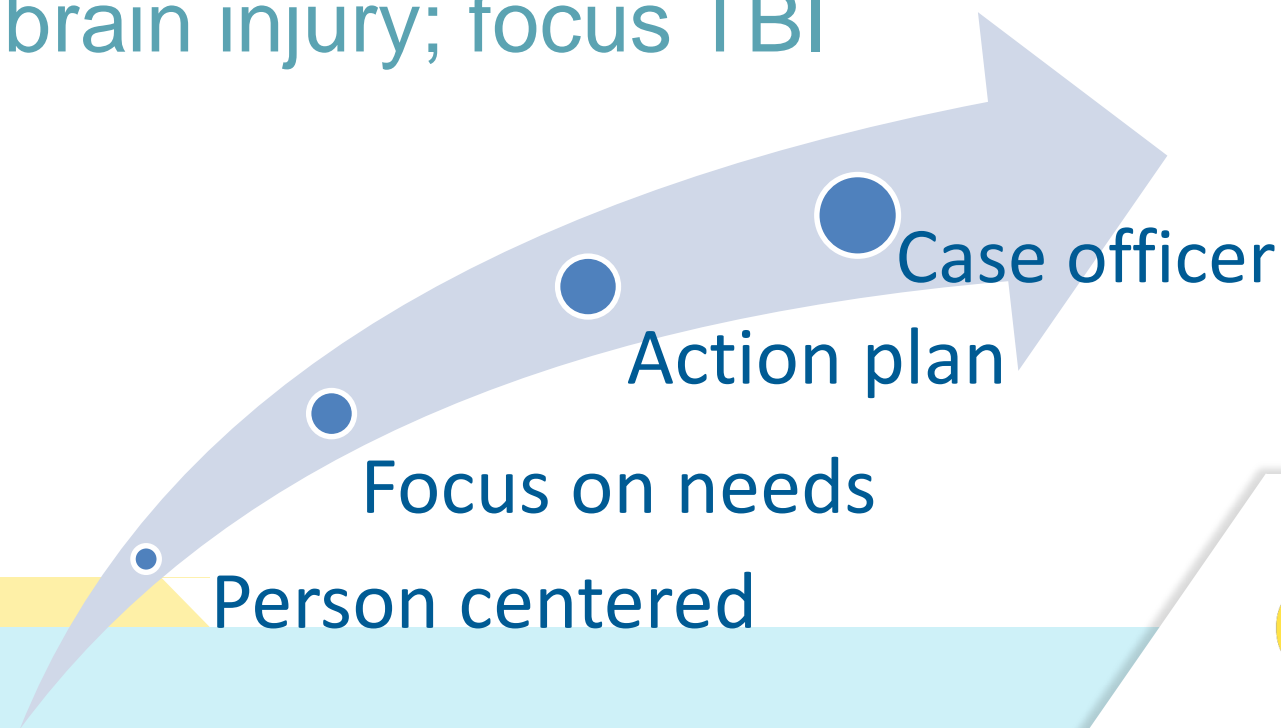
5 countries
6 different practices

The Cedar Foundation (Northern Ireland)



Inclusion Works

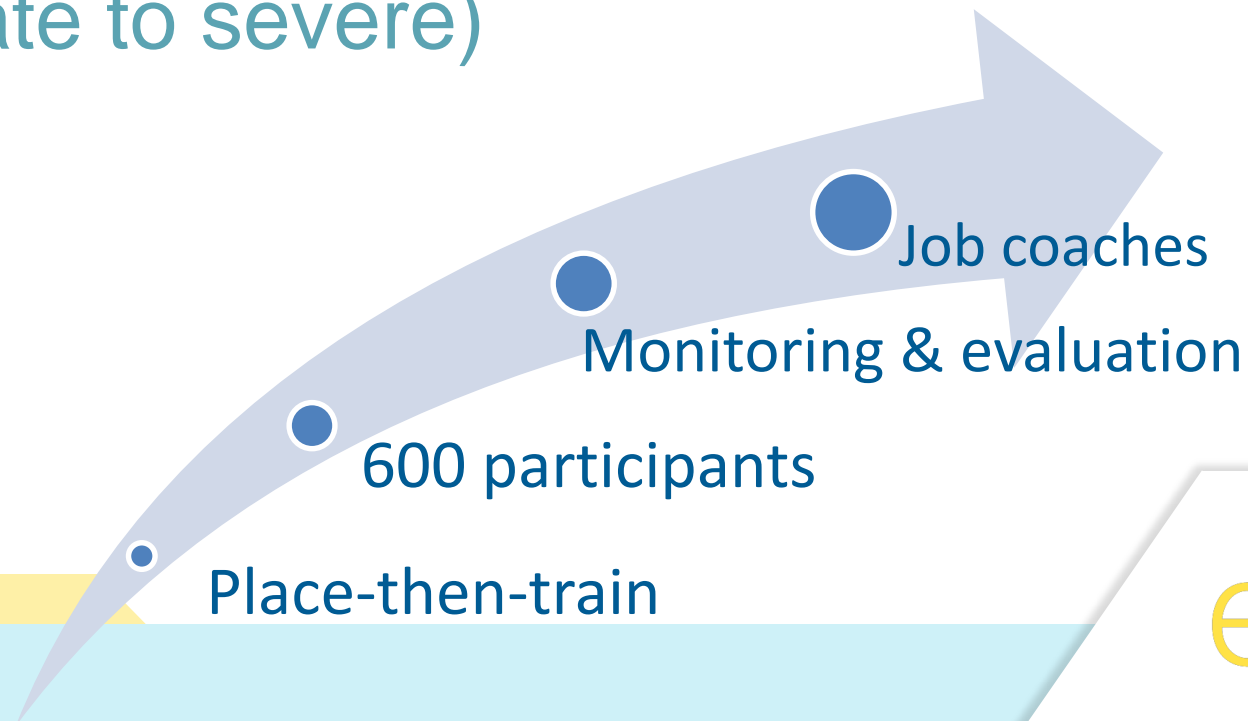
for people with physical disability, Autistic Spectrum Disorder and brain injury; focus TBI



Institut national d'assurance maladie-invalidité (Belgium)



Pilot of Individual Placement and Support model
for people in work incapacity due to mental health
issues (moderate to severe)



Fundación Rey Ardid (Spain)



Programme for people with any kind of disability

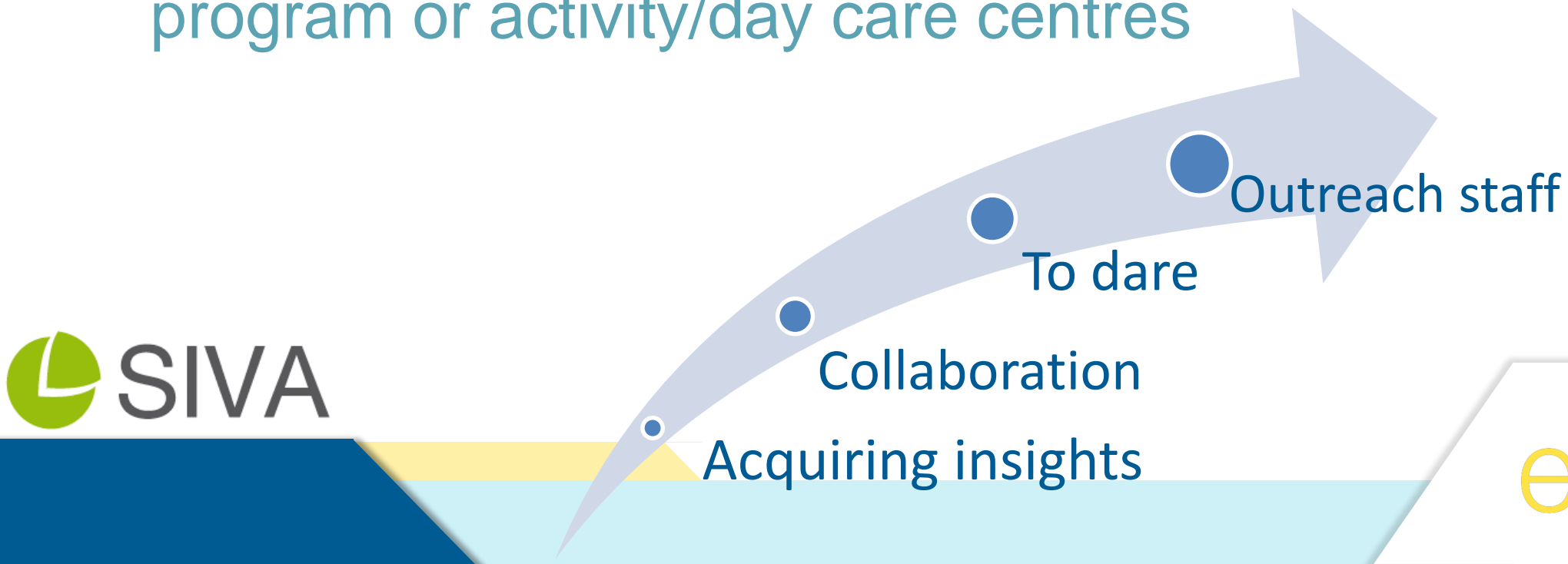


GTB (Belgium)



We Go to Work

for inactive persons of working age in a rehabilitation program or activity/day care centres



Heliomare (Netherlands)



Early intervention in vocational rehabilitation
for unemployed, economically inactive, long-term
absent, physical and coping disabilities.



Case manager
Findings & support
Labour-specific intervention
Rehabilitation programme



Sociālās integrācijas valsts aģentūra (Latvia)



The Career development support methodology

for persons with different kinds of disability or at the risk of getting disability or for persons with mental, behavioural or neurodevelopmental disorders



So different...

...so much in common

- Multidisciplinary team work
- Based on needs
- Client-centered
- Coordinated
- Motivating and inspiring

Success factors

- Coordinating support person
- Continued access to the programme
- Monitoring and evaluation
- Partnerships for integrated and comprehensive support
- Information and outreach
- Sustainability
- Early intervention

Challenges

- Financial support – the so-called “benefit trap”
- Employers
- Psychological and social issues
- Budget
- Legislation

Recommendations for policy

- Funding
- Pathway for legislation development
- Social enterprise
- Quality of the services
- Early intervention
- Initiatives from policy makers
- Supplementing legislation



[@SIVA_gov_lv](#)



[SocialasIntegrācijasValstsAgentura](#)

www.siva.gov.lv
siva@siva.gov.lv



[@EPR_Network](#)



[EPR.Brussels](#)

www.epr.eu
ljones@epr.eu