

# WELCOME

## EPR Annual Conference 2025

Leading the Change in Rehabilitation:  
Towards Future-Proof Services

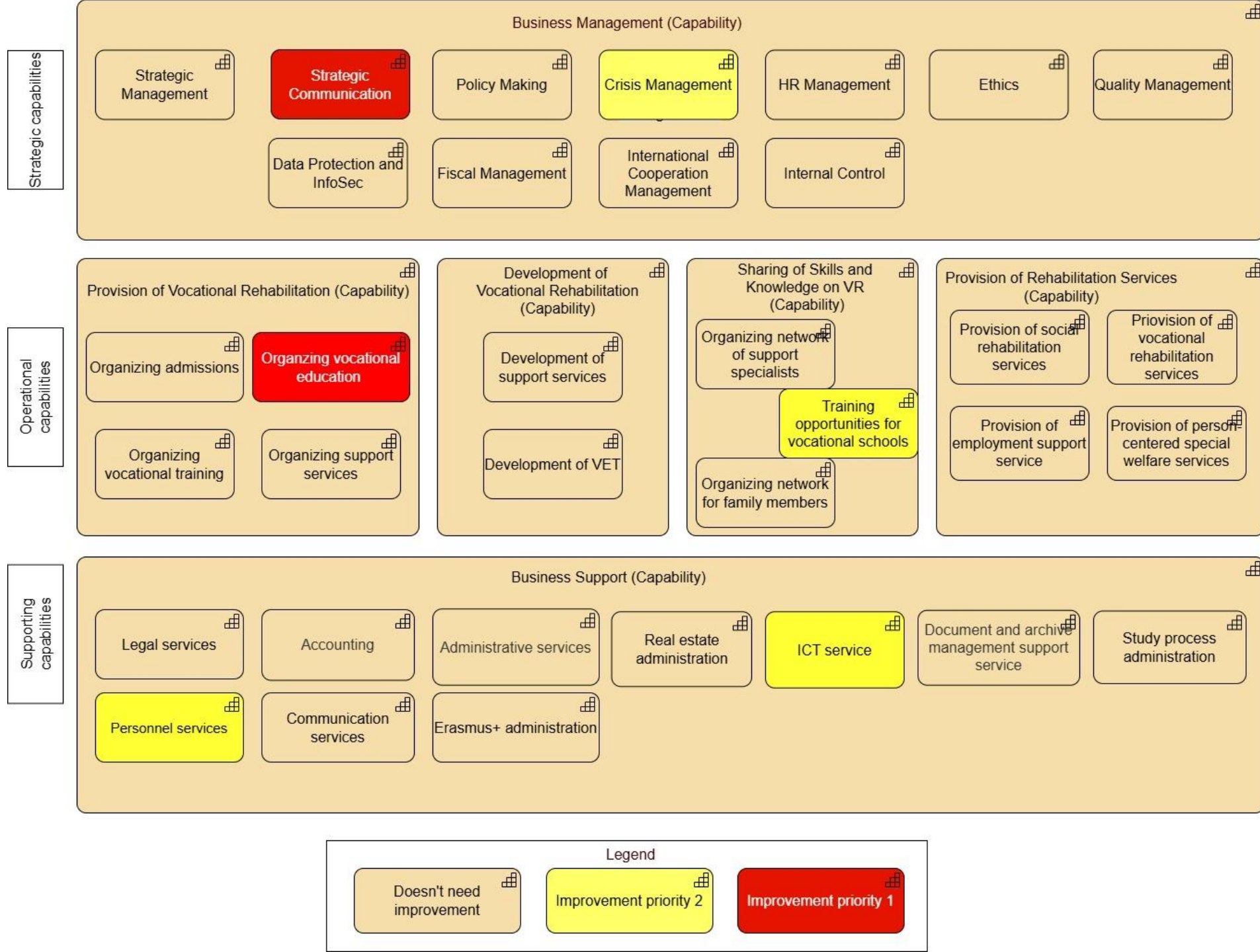
5–6 June 2025 | Antwerp, Belgium

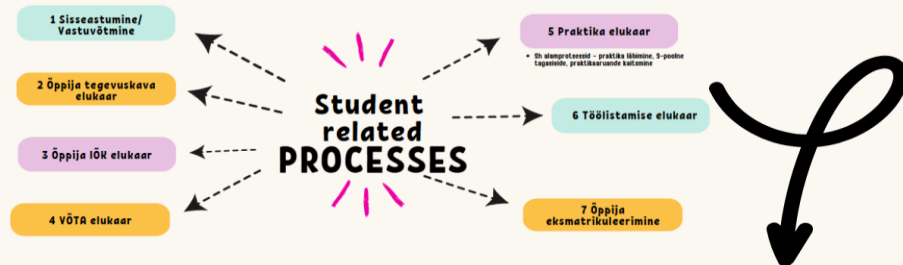


# Open Spaces Workshops: Leadership and quality management

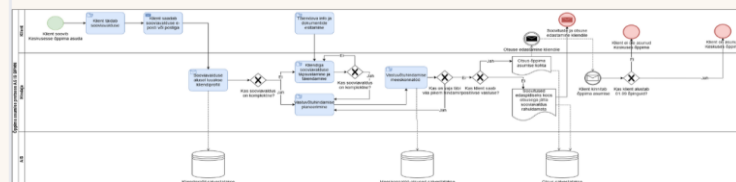
- Karen Warson – Association for Supported Employment Europe (ASEE)
- Veronika Kaska – Astangu VRC



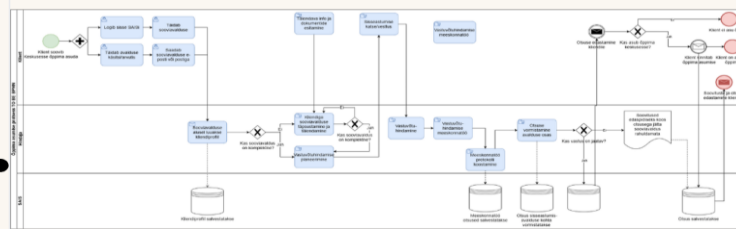




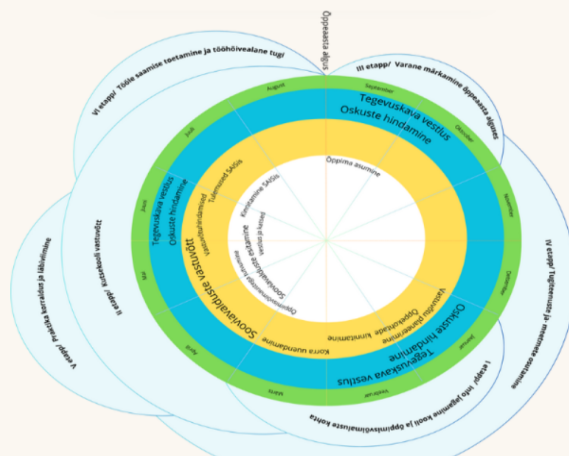
## Admissions process AS IS BPMN



## Admissions process TO BE BPMN



First attempts are not pretty



# Guiding question

- *What prompted you to start mapping services and processes?*
- *How can leadership at every level model transparency and principled excellence?*
- *What would it take to truly integrate our values into everyday decisions, not just in words but in actions?*



# THANK YOU!

See you back at the  
conference room!

