



MARSI BIONICS

A step into the future



WHO WE ARE

Born in 2013 as a spin-off of the Spanish National Research Council (CSIC), our activity is focused on the development of lower limb exoskeletons for therapy and social integration of impaired children.

Based on an innovative proprietary technology, we believe we are in our unique position to bring life-changing solutions to those who need to maintain/improve their gait capability and social integration.

ATLAS 2030

- The world's first paediatric exoskeleton designed for clinical and specialised settings
- Robotic-assisted standing and walking under professional supervision



EXPLORER

- Personal-use paediatric exoskeleton.
- Designed for home, school, parks and community spaces.

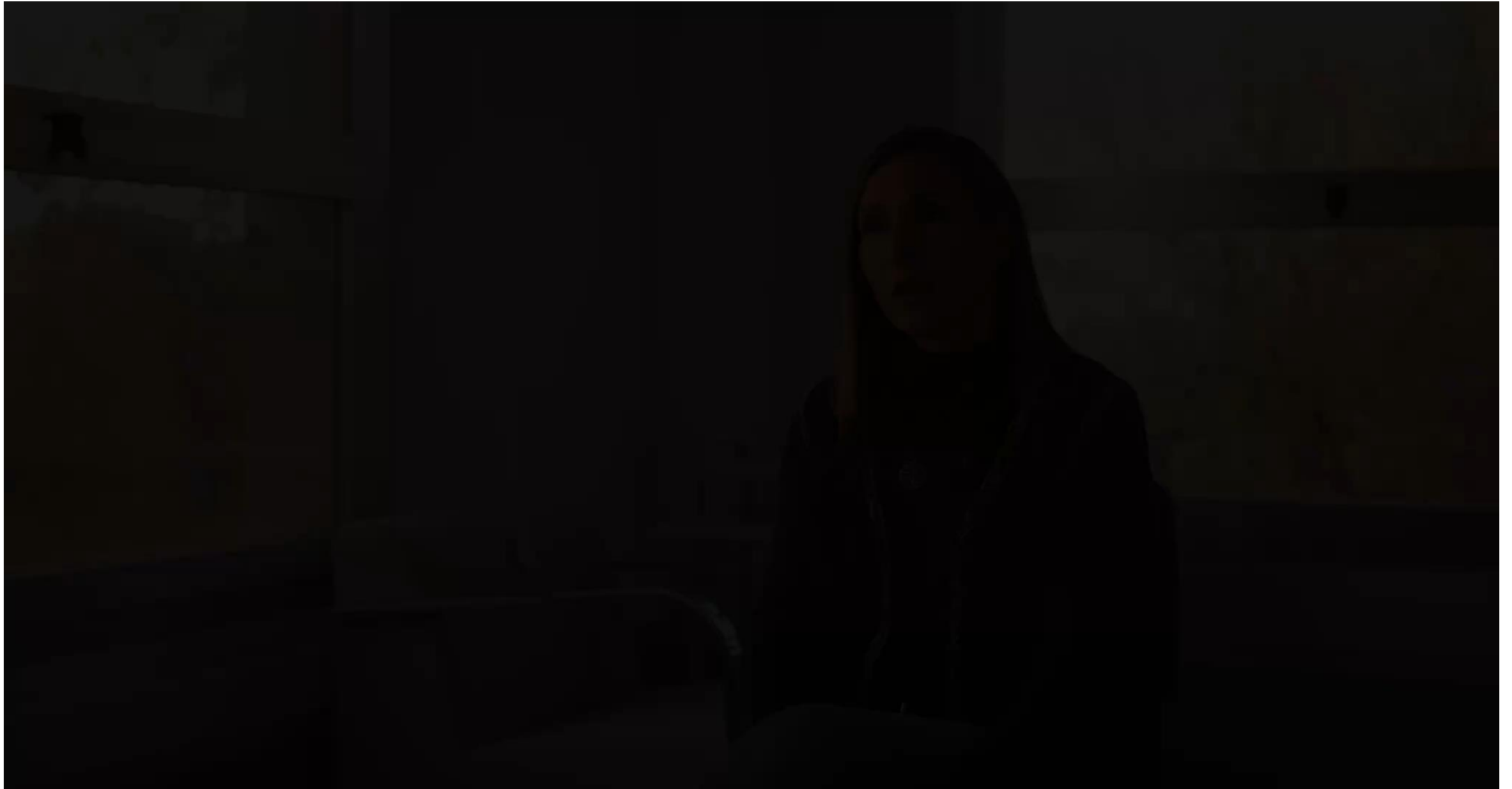
WHAT WE DO AND WHY WE DO IT

MOBILITY AS AGATEWAY TO PARTICIPATION

Assistive technology designed around real needs can open opportunities for participation.

DEMOCRATIZING ACCESS TO EXOSKELETONS

Making advanced mobility technology progressively accessible and sustainable for hospitals, rehabilitation centres, public services and daily environments





MARSI BIONICS

Thank you