



# SHAPES: Smart and Health Ageing through People Engaging in supportive Systems



EPR Online Awareness Raising Event  
10th December 2021

***Challenges and Good Practice Supporting Older People with Disabilities***

Dr Alexia Zurkuhlen  
Head of gewi-Institute for healthcare studies  
Cologne, Germany



**SHAPES aims to create an open Ecosystem enabling the large-scale deployment of digital solutions for healthy and independent living addressed to older individuals who face reduced functionality and capabilities.**



## EXPECTED IMPACTS

- A European-led platform for smart, healthy and independent living at home.
- Increased competitiveness of the European ICT industry, through enhanced interoperability, best practices and financing models and scalable markets.
- Links and synergies between Member States and regional initiatives.
- Improved evidence-based efficiency of health and care systems with demonstrated added-value of underlying technologies.
- Improved quality of life and health for involved users and carers, with demonstrated added-value of underlying technologies.
- User-centered, validated and innovative solutions addressing accessibility, privacy, security, vulnerability, liability and trust in connected data spaces.





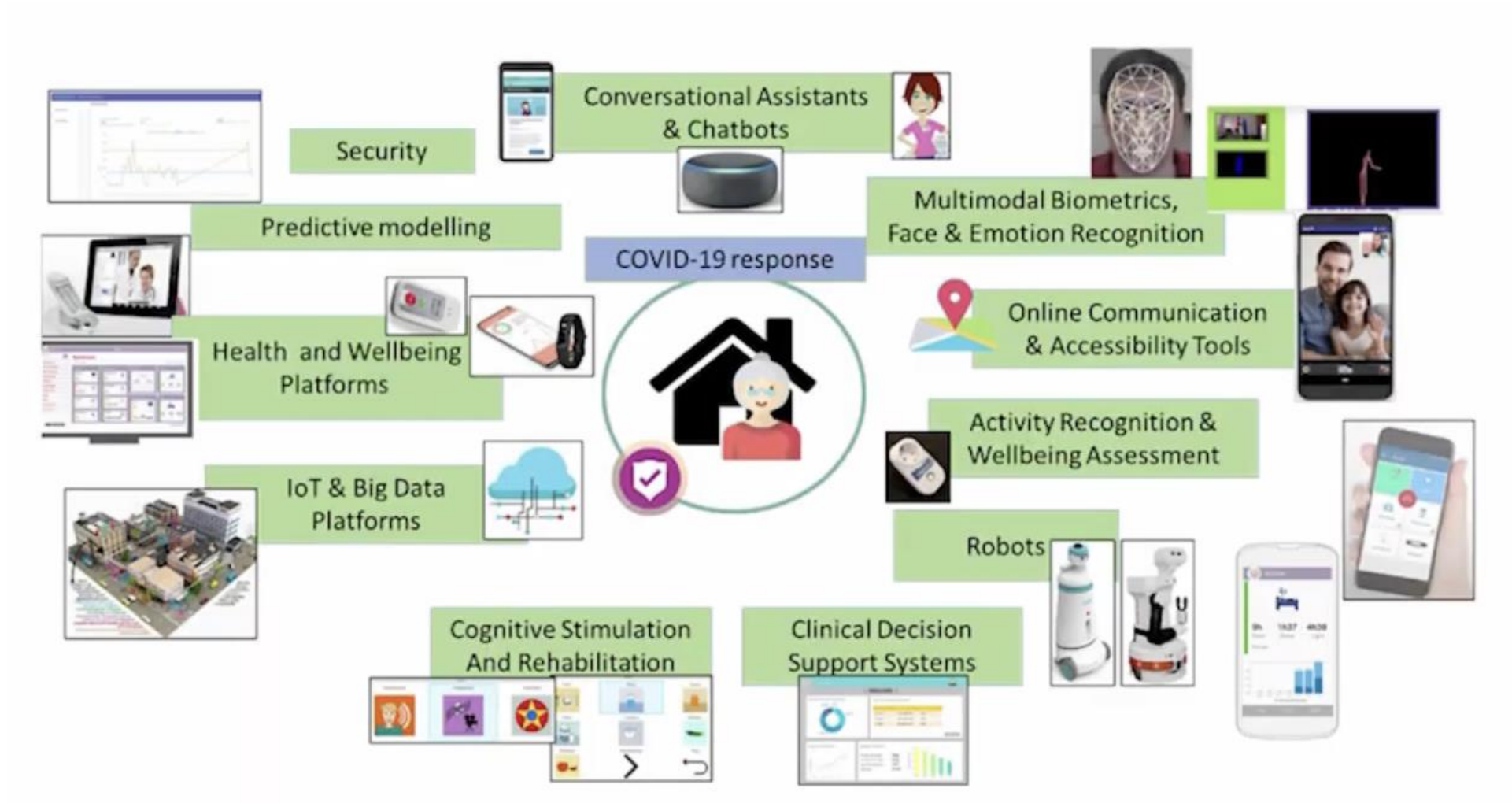


## SHAPES AWARENESS RAISING

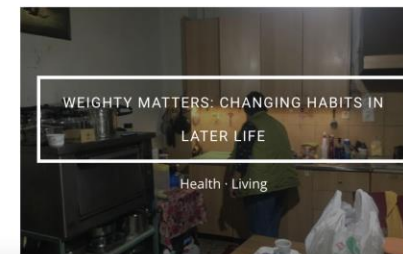
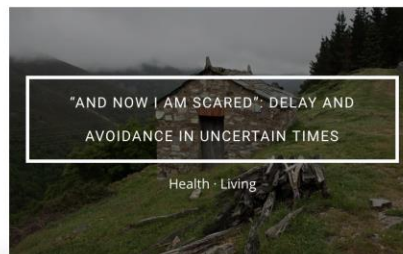
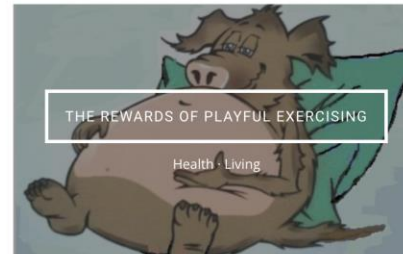
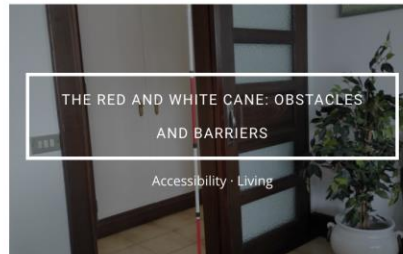


**Assistive technologies need to foster  
autonomy and independence  
without increasing social exclusion**

**Recommendations of the United Nations' Independent Expert  
on the Enjoyment of All Human Rights by Older Persons, 2017**









# Pan-European Pilot Campaign



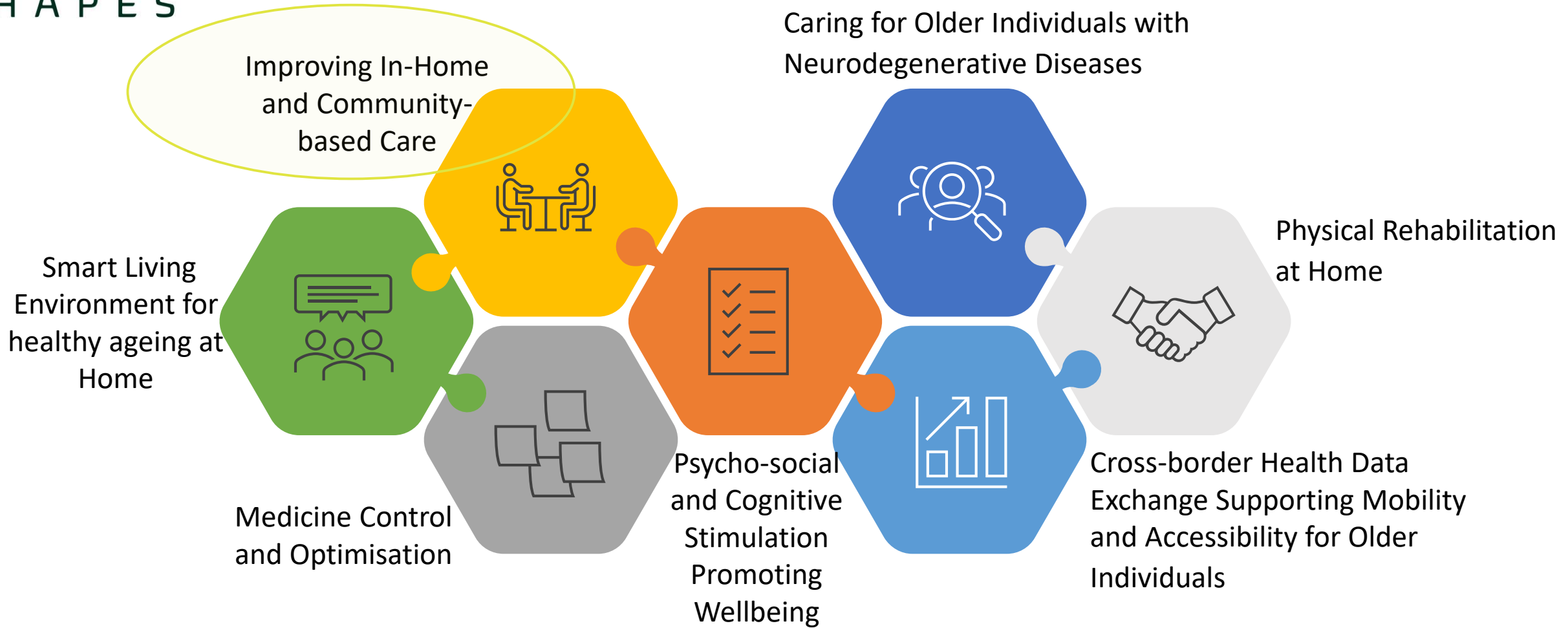
SHAPES aims to create an open Ecosystem enabling the large-scale deployment of digital solutions for healthy and independent living addressed to older individuals who face reduced functionality and capabilities.



- 36 Pilot activities in total
- Taking place in 15 sites in 10 EU member states
  - among them 6 EIP on AHA Reference sites
  - = over 2,000 over 65 year old participants to test new technologies and innovations integrating health and wellbeing data onto an open platform



Smart and Healthy Ageing through People  
Engaging in Supportive Systems





## Stage 1 of Pilot Campaign Design and Preparation



### PHASE 1

#### PLAN, DESIGN & KPIS

Scenarios to validate initial concepts and approaches

Adapt the overall SHAPES concepts and evaluation methodologies to the specific regions involved in the respective pilot theme.

### PHASE 2

#### MOCKUP OR PROTOTYPE VALIDATION

Validation to assess user experience and acceptance

Allows the integration of user feedback at an early stage of the technological development process

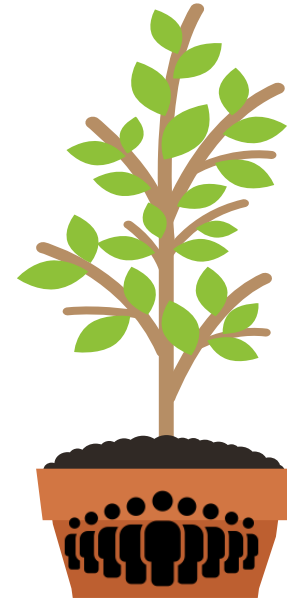
### PHASE 3

#### HANDS ON EXPERIMENTS

Validate functional elements and gather feedback

Users can test the SHAPES digital solutions of the respective UC in order to accustom the user to the technical tool and get feedback on the functional elements of SHAPES

## Stage 2 of Pilot Campaign Deployment & Execution



### PHASE 4

#### DEPLOYMENT IN CONTROLLED ENVIRONMENT

Experimenting with a single SHAPES DS up to demonstrating (part of) the platform in a controlled environment.

Test the SHAPES methods and solutions for later use in phase 5. This small-scale demonstration will be performed with a smaller group of participants and/or with fewer SHAPES digital solutions to identify factors which could hinder the pilot site to organise and perform a successful large-scale demonstration.

### PHASE 5

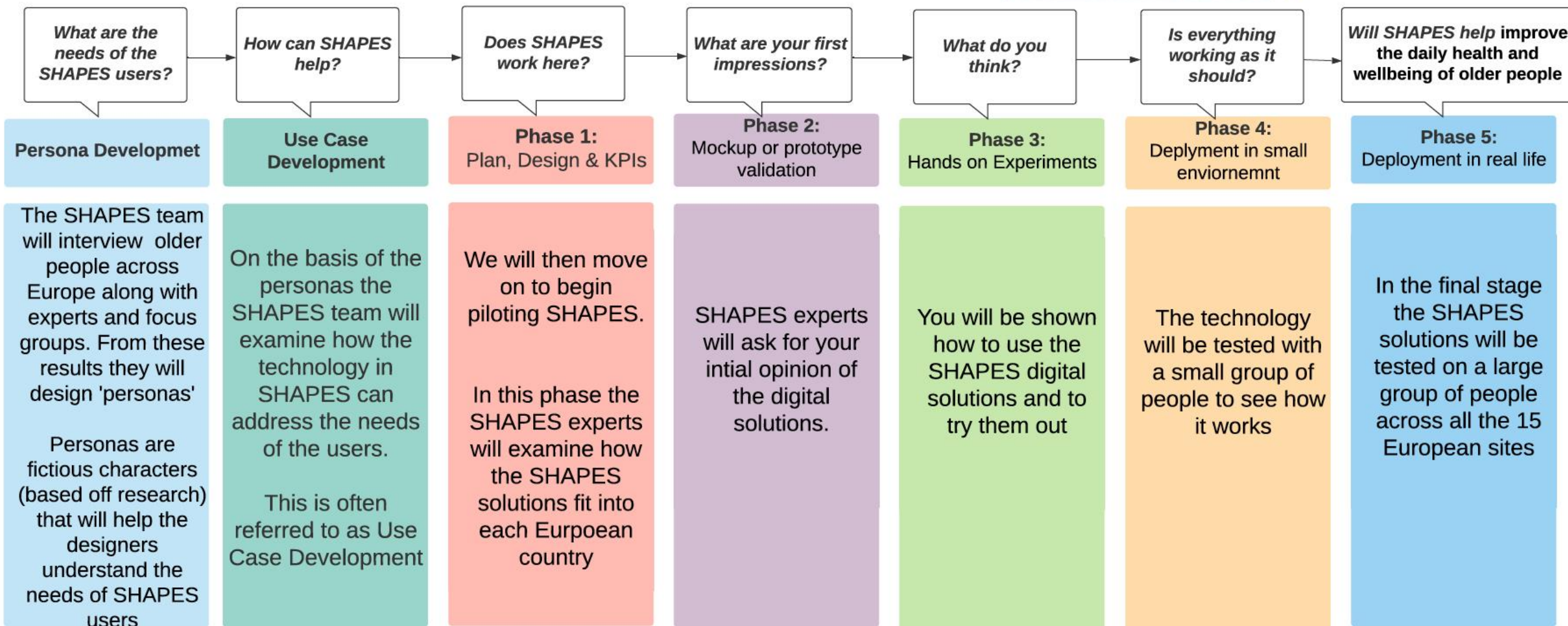
#### DEPLOYMENT IN REAL LIFE USE CASES

Demonstrations in real-life conditions involving targeted groups

Large scale demonstration of the SHAPES solution. In this phase the digital solutions, methods and processes will be tested under real-life conditions with the targeted users in the 15 European reference sites.



**SHAPES**  
Smart and Health Ageing  
through People Engaging in supportive Systems





# Pilot Site: Oberbergischer Kreis



- 10 dams, many nature reserves
- Small agriculture and forestry plots
- 270,000 inhabitants, approx.  
170,000 over 65 Jahre year olds
- Very low medical density (141.5  
per 100,000 in 2019)



European Innovation  
Partnership on Active  
and Healthy Ageing  
REFERENCE SITE



Gesundheitsregion  
KölnBonn  
Gesundheitskompetenz im Rheinland

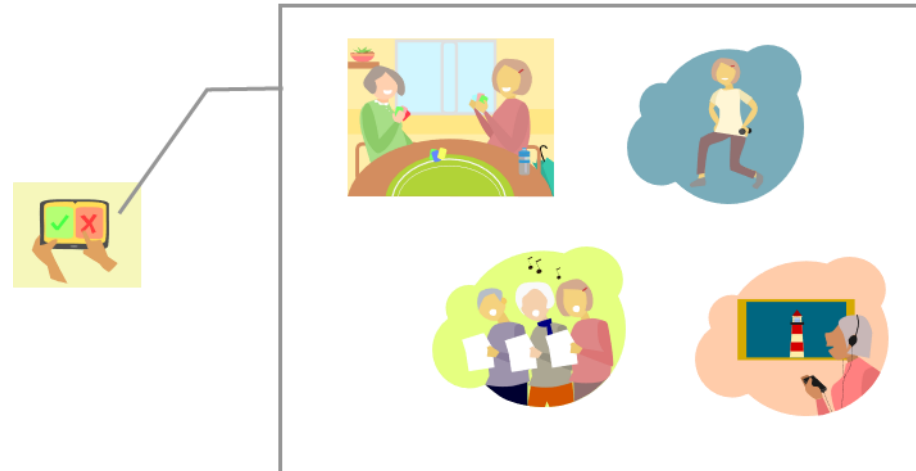


# Pilot Theme: Improving In-Home & Community-based Care

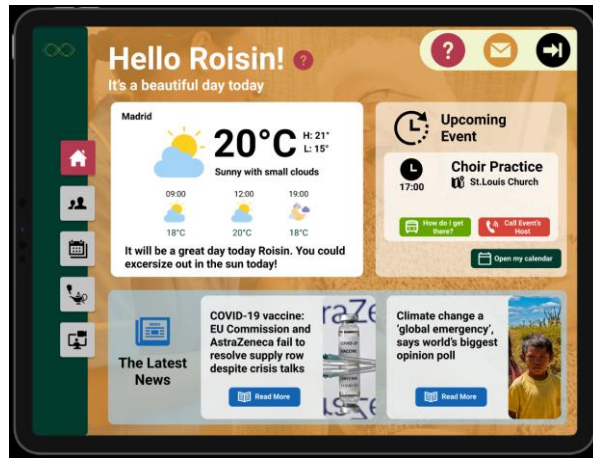


Recruiting and informing participants

4 use cases



# Pilot Theme: Improving In-Home & Community-based Care



UC-PT2-002  
Supporting the interaction of the individual with the community



UC-PT2-003  
LLM Care Health and Social Care Ecosystem for Cognitive and Physical training



UC-PT2-001  
Remote monitoring of key health parameters



Hello Helena

Nice to see you

I'm your companion. I'll take care about you. During the scheduled patrols, I will watch over you in the event of a fall, help you orient yourself at night by lighting the way to go to the toilet/kitchen..., offer you a distraction during the day or a videoconference with your family), .....

UC-PT2-004a/b  
Night surveillance in community care/ home setting