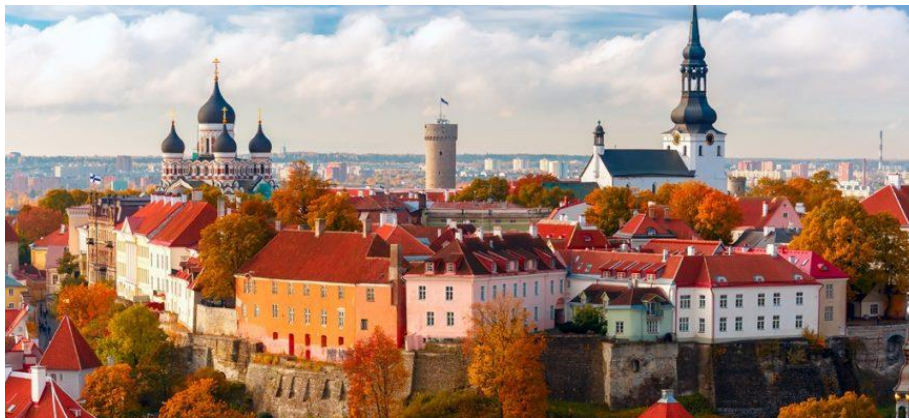


EPR ANNUAL CONFERENCE 03 – 05 JUNE 2019 TALLINN, ESTONIA

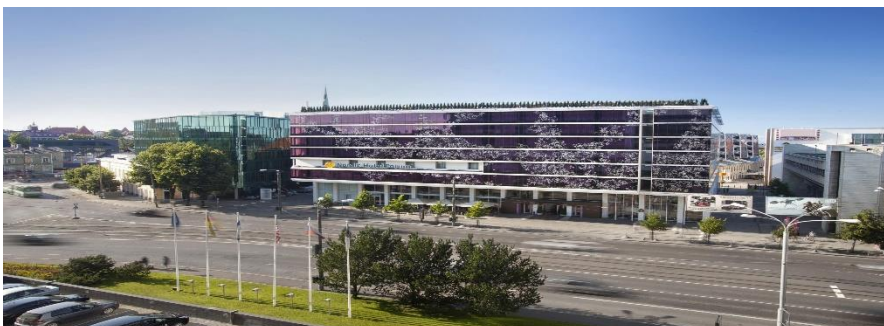
Travel & Practical Information



The Conference Venue

The EPR Annual Conference 2019 will take place in the **Nordic Hotel Forum** in **Viru väljak 3, 10111 Tallinn, Estonia.**

Nordic Hotel Forum is a modern four-star superior business and conference hotel in the very heart of Tallinn, at a prominent location on the edge of the picturesque Tallinn Old Town, a UNESCO World Heritage site.



Thinking of everything, taking care of the smallest detail, being an invisible presence ready to fulfill your every wish, even those you have not yet had a chance to express – this is the Nordic Hotel Forum. We wish you a warm welcome!



How to reach the Conference Venue from Tallinn Airport

Nordic Hotel Forum:

Lennart Meri Tallinn Airport is located just 4 km from the city centre, so transport to the hotel takes surprisingly little time. By car, [Tallinn Airport](#) is just 10 minutes away. A taxi stand can be found just outside the airport's arrivals hall. The fare from the airport to the hotel is about €5 to €10. Read more about Tallinn's taxis [here](#).

Tram no. 4 from the airport to the city centre operates a frequent schedule, the tram stop is located next to the airport terminal towards the city. Single journey tickets can be bought in cash from the driver for €2. The closest stops to the hotel are the "Hobujaama" or "Viru" stops.

Tallink City Hotel:

by **BUS**

– From Tallinn Airport take the bus no 2.

Bus no. 2 runs to the City Centre and the bus stop is on Tartu road.

– Leave the bus at stop "A.Laikmaa".

by **TRAM**

– From Tallinn Airport take tram line no. 4.

Tram stop is located on the city side of the passenger terminal of the airport.

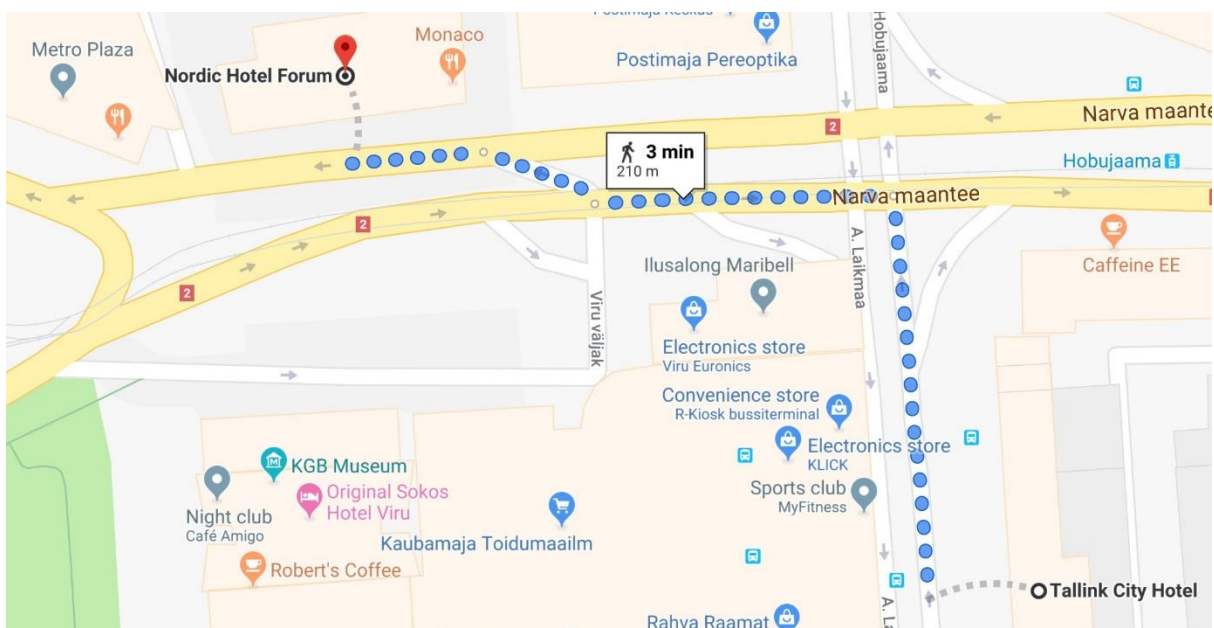
– Leave the tram at station "Viru"

by **TAXI/UBER**

– The drive from Tallinn airport to the hotel takes 14 minutes, and will cost between €5 to €10.

How to get from Tallink City Hotel to Nordic Hotel Forum:

To get from Tallink to Nordic Forum, it is a short distance of 210 meters. See map:



How to reach Astangu from Nordic Hotel Forum

Astangu is located outside Tallinn, which means it is only accessible by bus or taxi/Uber.

by **BUS**

- Walk to the stop “Viru” (5 min, 280m).
- Take bus no. 36 towards “Väike-Õismäe parkla” (33 min).
- Leave the bus at the stop “Järveotsa kool” and walk 500 m (5 min).

or

- Walk to the stop “Kivisilla” (5 min, 350 m).
- Take bus no. 46 towards “Väike-Õismäe parkla” (17 min).
- Leave the bus at the stop “Kullerkupu” and walk 1.3 km (15 min).

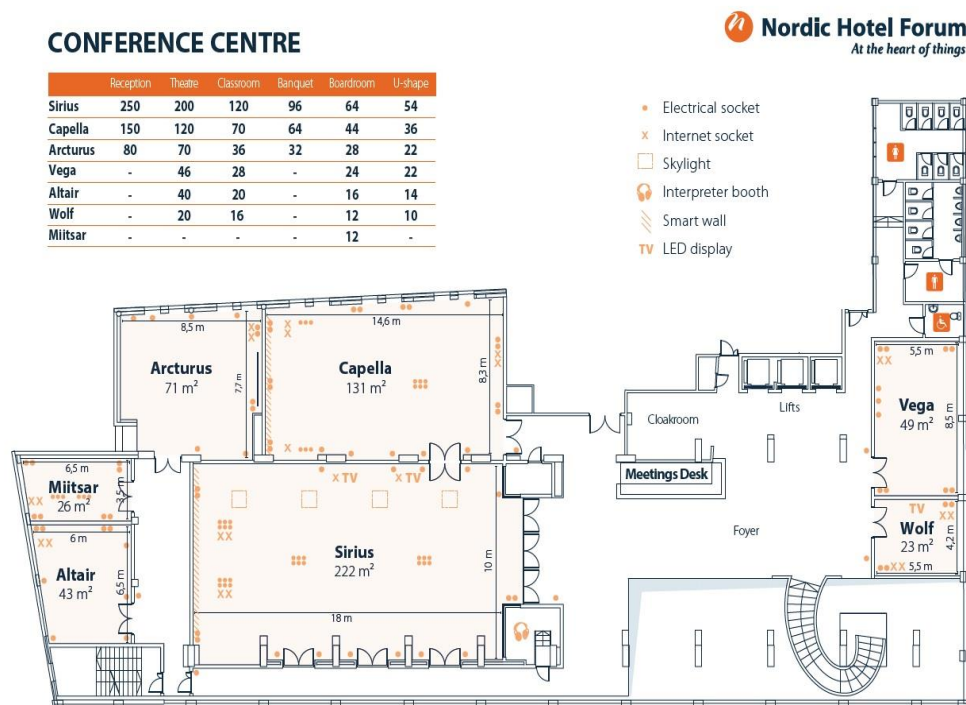
or

- Walk to the stop “Kivisilla” (5 min, 350 m).
- Take bus no. 46 towards “Väike-Õismäe parkla” (15 min).
- Leave the bus at the stop “Meistri” and change to bus no. 61 towards “Astangu” (11 min).
- Leave the bus at the stop “Harku-Kadaka” and walk 140 m (1 min).

by **TAXI/UBER**

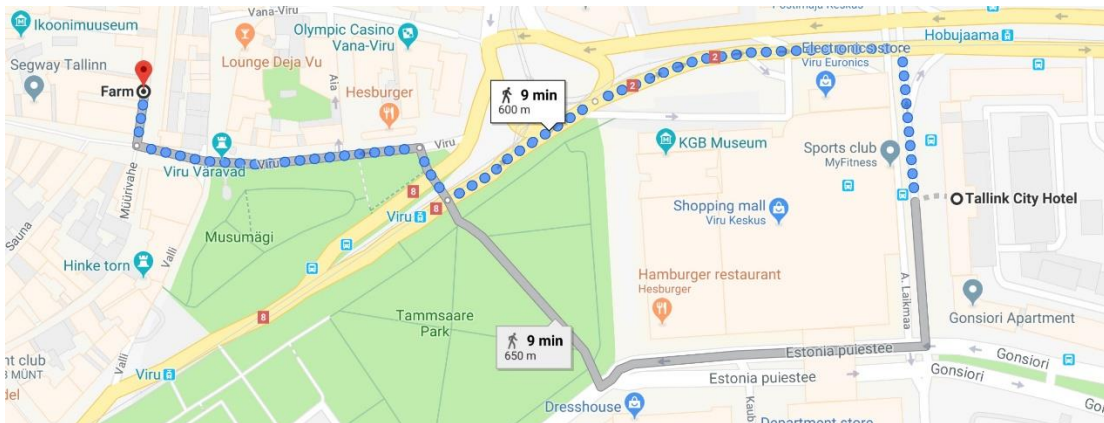
- The drive takes 18 minutes and will cost between €8 to €10.

Nordic Hotel Forum: Conference Centre floorplan



Guide to FARM – the restaurant for the conference dinner

By foot (600 meters, 9 minutes):



By BUS (7 minutes):

Take bus no. 14 or 18 from the stop “Viru keskus I” to the stop “Viru”. Then walk 230 meters.

By TRAM (7 minutes):

Take tram no. 3 or 4 from the stop “Hobujaama” to the stop “Viru”. Then walk 260 meters.

Read the guide about accessibility in Tallinn [here](#).

Important Contact Information

In case of any problems or emergency, you can reach an EPR staff member at the following mobile number:

+ 39 348 392 31 35

- Main organiser for Astangu
- Main organiser for EPR

Roberto Zanon, EPR Secretariat r.zanon@epr.eu

Tel: +39 348 392 31 35

Ola Eloranta, EPR Secretariat

intern@epr.eu

Tel: +32 493 84 37 58



This EPR conference has received the financial support from the European Union Programme for Employment and Social Innovation “EaSI” (2014-2020). For further information see: <http://ec.europa.eu/social/easi>