



# **Building Active & Inclusive Citizenship Together: Services and Support for Persons with Disabilities**

**Paris - June 4<sup>th</sup> 2026**

**Evacuation and continuity of  
services for persons with  
disabilities in Grindavík  
Iceland**

**Nökkvi Már Jónsson  
Educational and social affairs director  
Grindavík, Iceland**

Geology



Community



Support services







Google Earth

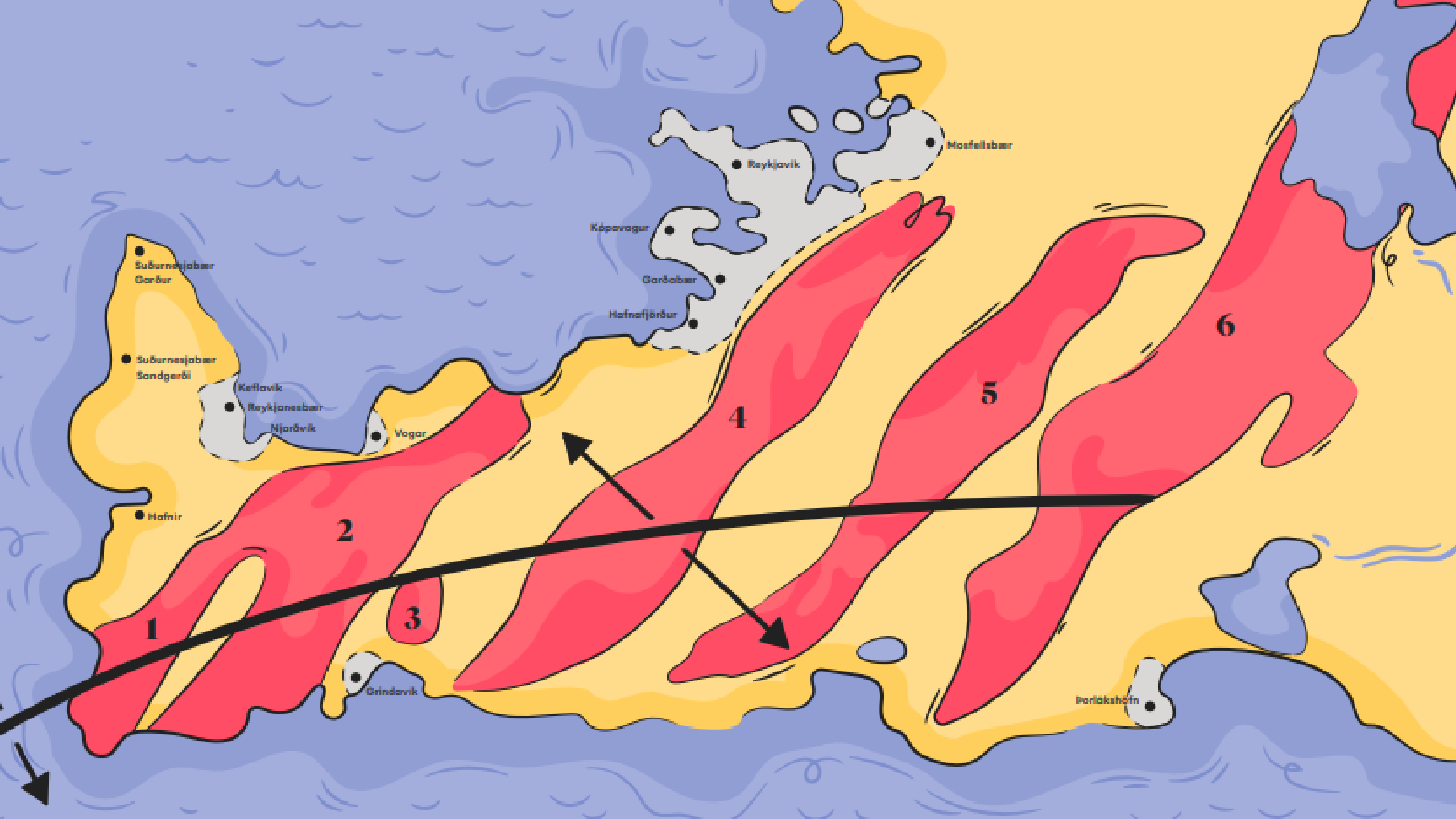


Google

Google Earth

© 2025 Google

© 2025 Google



• Suðurnesjabær  
Garður

• Suðurnesjabær  
Sandgerði

• Hafnir

Keflavík  
Reykjanesbær  
Njarðvík

Vagar

Grindavík

Kópavogur

Garðabær

Hafnarfjörður

Reykjavík

Mosfellsbær

Þorlákshöfn

1

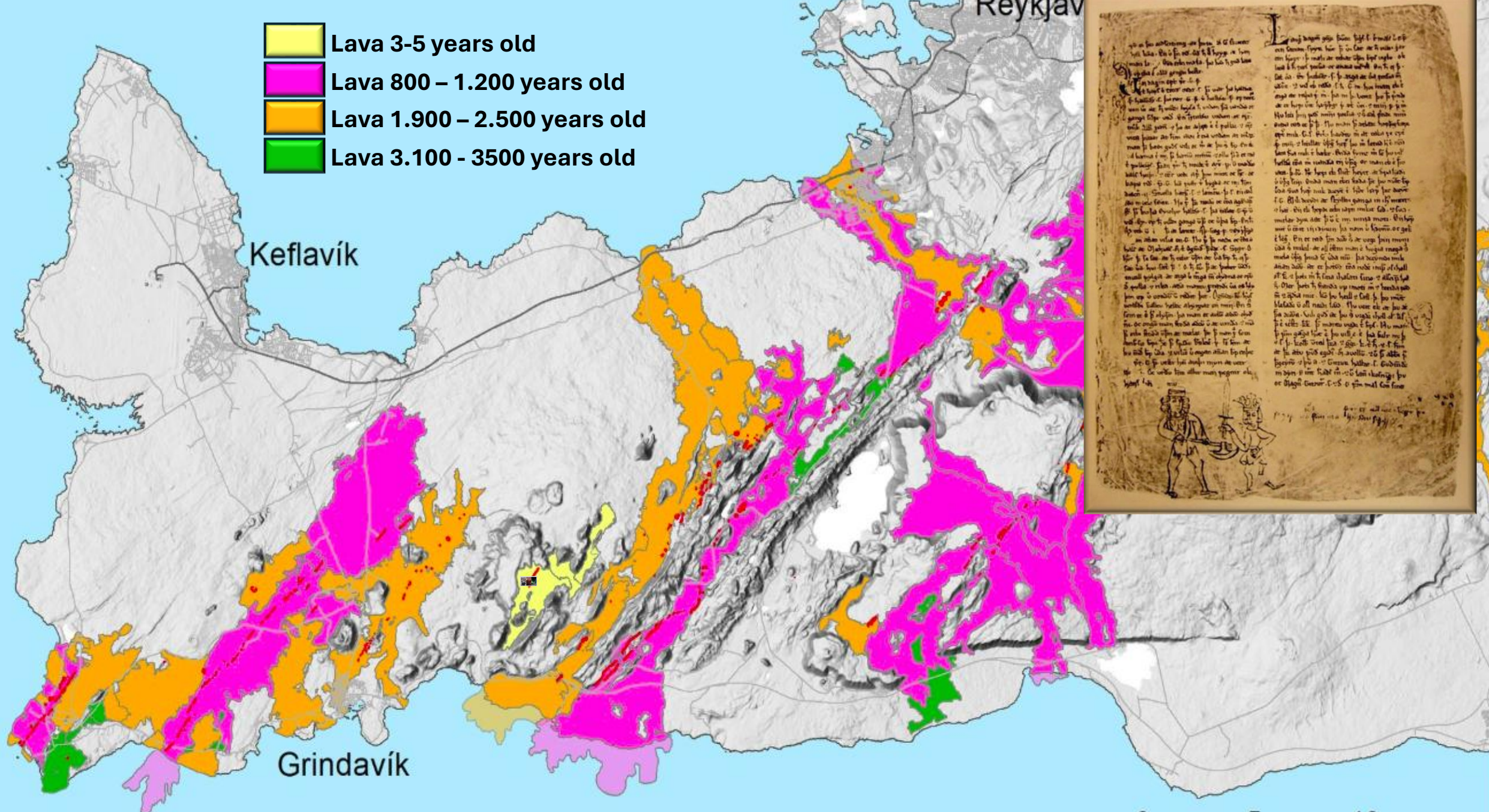
2

3

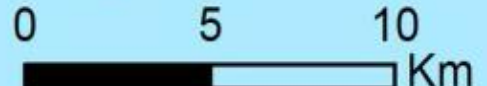
4

5

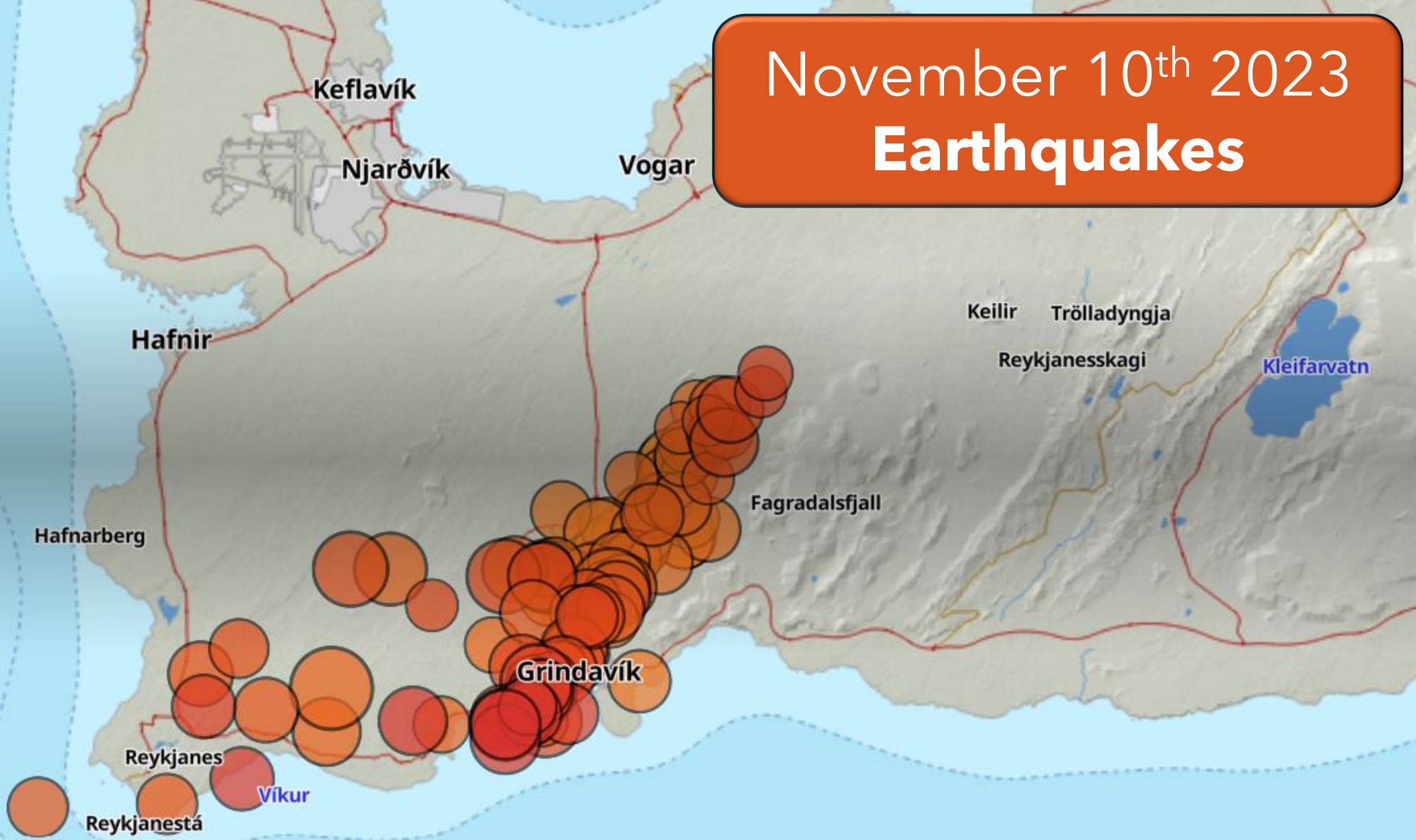
6



- Lava 3-5 years old
- Lava 800 – 1.200 years old
- Lava 1.900 – 2.500 years old
- Lava 3.100 - 3500 years old



# November 10<sup>th</sup> 2023 Earthquakes



# November 10<sup>th</sup> 2023

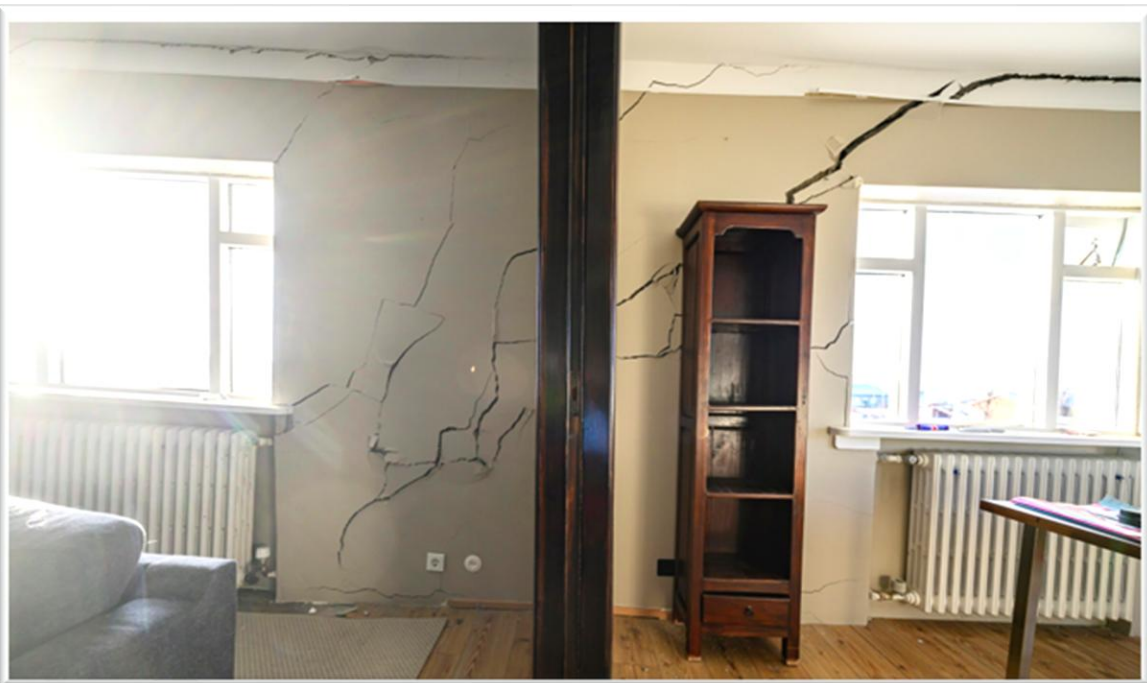
---

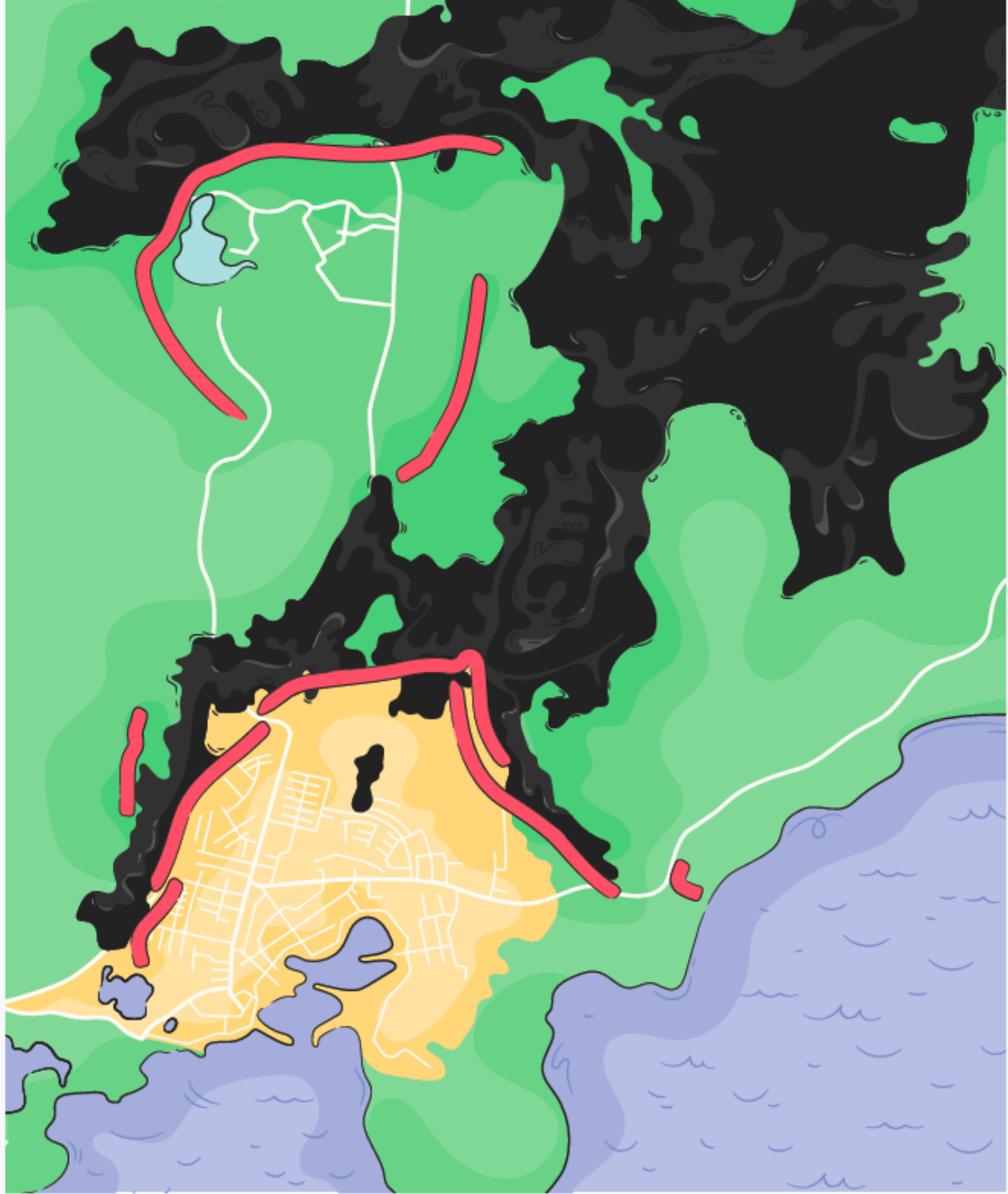
On the evening of November 10<sup>th</sup> 2023, Grindavík was evacuated when a **dyke formed partly underneath the town.**

The evacuation began around midnight and was **over in a few hours.** Many families only had bare essentials with them when they left.

About 3800 residents evacuated and **scattered across the country** to stay with relatives, friends or in mass relief centres.

**Daily life changed** – Schools were closed, businesses shuttered and the community dispersed.





# The Protective Levees

---

Construction began in January 2024. The levees are made of 2.5 million cubic meters of earth material and are over **13.5 km in total length.**

The levees have protected the town in **9 eruptions** from December 2023 to June 2025 - along with roads, the Svartsengi power plant and the Blue Lagoon from lava flows.



On January 14<sup>th</sup> 2024 a fissure opened inside the levees and the lava destroyed three homes





# Community



Grindavík was the **happiest municipality in all of Iceland**, according to a survey by the Directorate of Health on the happiness of Icelanders - 2019

Grindavík provided **diverse welfare services** to its residents, including general social services, services for the elderly and people with disabilities, child protection services as well as educational services.



# Community



Grindavík's harbour is the **heart of the community** and one of Iceland's main fishing ports. Seafaring has shaped the economy and culture of the town since its settlement.

In Grindavík, **tourism was thriving** as the town is located close to the international airport and the Blue Lagoon.





# Community



The town had a **very strong sports culture**, with both men's and women's teams competing in basketball and soccer in the top divisions of the Icelandic championships.

All residents at Túngata Special housing were big fans of the basketball team. The **attended every home game** and sometimes away games.



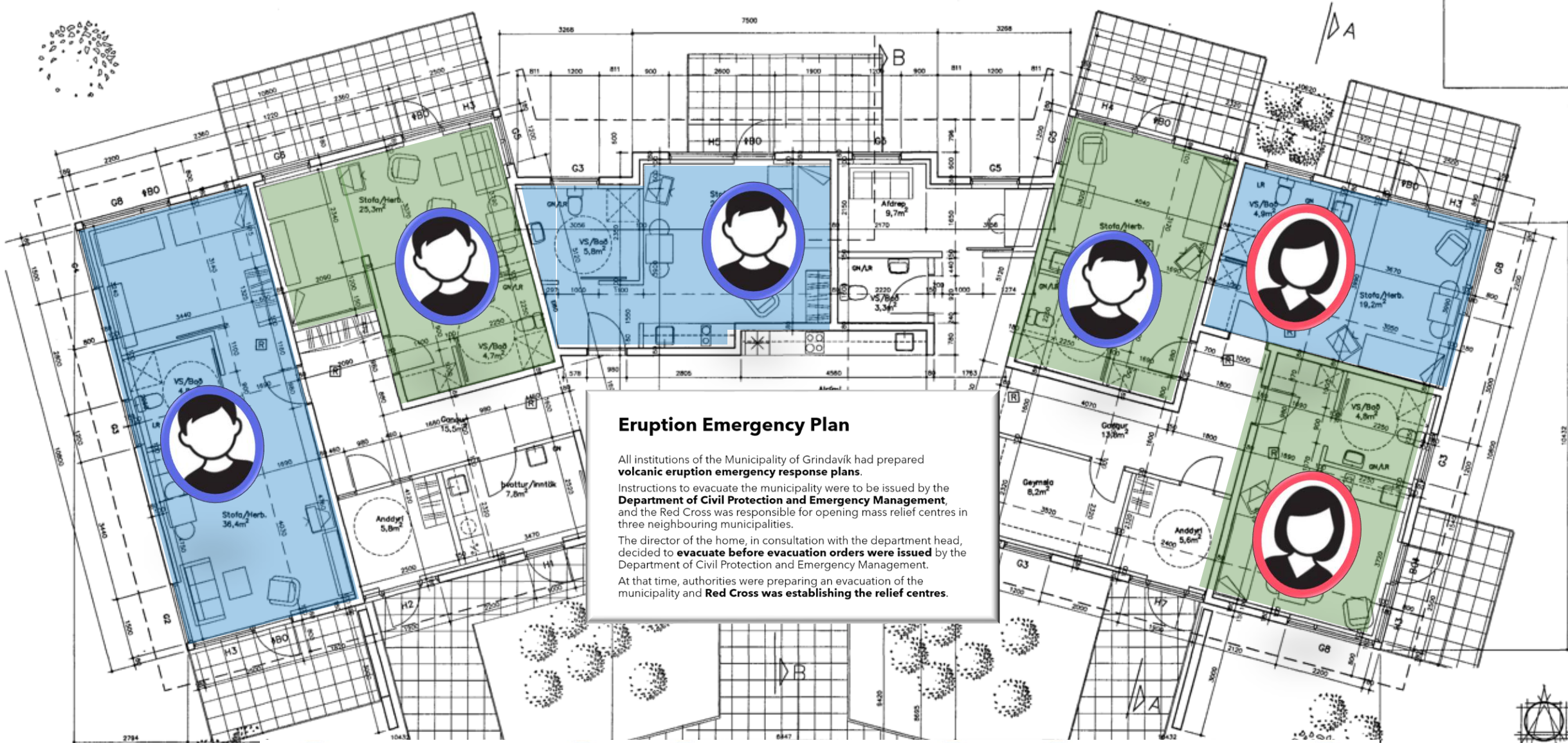




Google Earth  
Airbus, IBCAO



Google Earth



### Eruption Emergency Plan

All institutions of the Municipality of Grindavik had prepared **volcanic eruption emergency response plans**. Instructions to evacuate the municipality were to be issued by the **Department of Civil Protection and Emergency Management**, and the Red Cross was responsible for opening mass relief centres in three neighbouring municipalities.

The director of the home, in consultation with the department head, decided to **evacuate before evacuation orders were issued** by the Department of Civil Protection and Emergency Management.

At that time, authorities were preparing an evacuation of the municipality and **Red Cross was establishing the relief centres**.



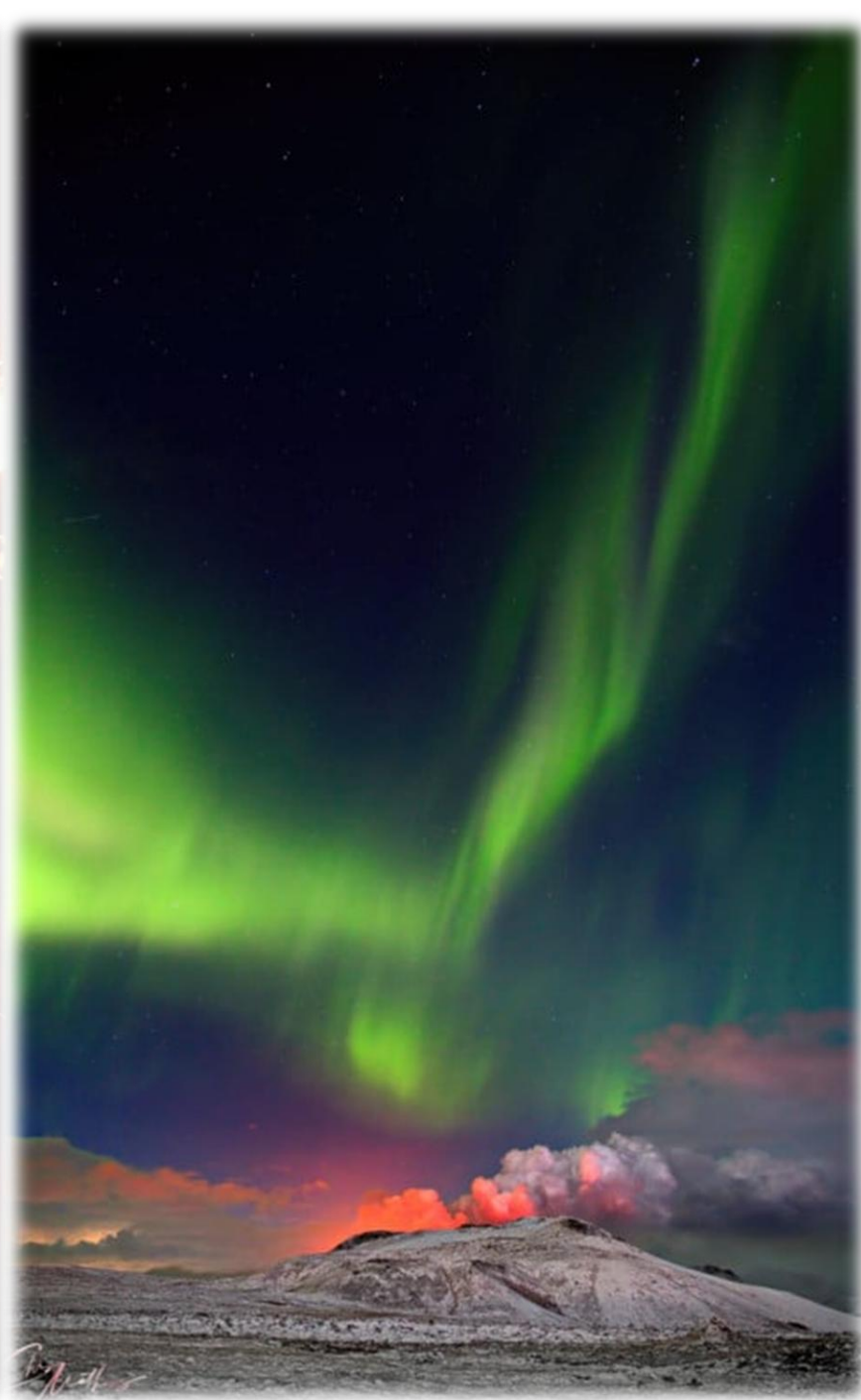
# Eruption Emergency Plan

All institutions of the Municipality of Grindavík had prepared **volcanic eruption emergency response plans**.

Instructions to evacuate the municipality were to be issued by the **Department of Civil Protection and Emergency Management**, and the Red Cross was responsible for opening mass relief centres in three neighbouring municipalities.

The director of the home, in consultation with the department head, decided to **evacuate before evacuation orders were issued** by the Department of Civil Protection and Emergency Management.

At that time, authorities were preparing an evacuation of the municipality and **Red Cross was establishing the relief centres**.



← 10.11.23

← 30.11.23

← 31.05.24






**Thank you!**